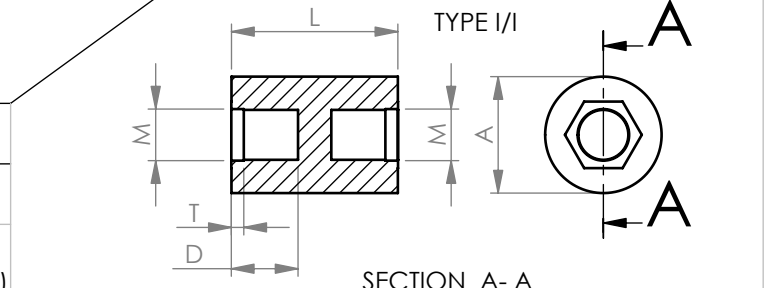


REV.	MODIFICATION.	DATE	DRN
A	NEW DRAWING	28/06/01	KD
B	SCN2001-087	04/09/01	KD
C	SCN2001-124	05/12/01	KD
D	SCN2002-017	13/02/02	KD
E	SCN2002-038	15/05/02	KD
F	SCN2003-107	15/07/03	OW
G	SCN2005-001	05/01/05	TC
08	ECN2006-028	17/03/06	OW
09	ECN2007-011	16/01/07	OW
10	ECN2007-037	12/02/07	SF
11	ECN2007-044	20/02/07	OW
12	ECN2007-191	05/11/07	NJB



NOTES

- 1) METRIC PRIMARY UNITS: mm
IMPERIAL SECONDARY UNITS: [inches]
- 2) INSERT AND STUD MATERIAL = BRASS (RMS-231)
- NICKEL PLATED (RMS-229)
BODY MATERIAL = NYLON 6 - WHITE (RMS-133)
(PARTS AVAILABLE IN UL94-V0 MATERIAL BY SPECIAL ORDER)
- 3) UNTHREADED LENGTH = 1.5 PITCH MAX
- 4) ALL MATERIALS TO COMPLY TO RESTRICTION OF HAZARDOUS SUBSTANCES (RoHS) EUROPEAN UNION DIRECTIVE

INFORMATION CONTAINED IN THIS DOCUMENT IS CONFIDENTIAL TO RICHCO INTERNATIONAL Co. Ltd. AND MAY NOT BE DISCLOSED OR REPRODUCED IN WHOLE OR PART WITHOUT THEIR WRITTEN CONSENT.

GENERAL TOLERANCES ±0.25 [0.010]
UNLESS OTHERWISE STATED
1 DECIMAL PLACE ±
2 DECIMAL PLACES ±
ANGULAR ±1°

THIRD ANGLE

MATERIAL: SEE NOTE 2
COLOUR: SEE NOTE 2

DESCRIPTION: TNSP-MX-A-L-TYPE
PART No: SEE TABLE

DRG No: 3100305
NPR No: N/A
SHEET SIZE A4

DRN OW
DATE 17/03/06
CHKD NBr
DATE 17/03/06
SCALE NTS
SHEET No. 1 OF 1

PART DESCRIPTION	M	A	B	D	T	LENGTH
TNSP-M12-30.0-L-TYPE	M12	30.0 [1.181]	25.0 [0.984]		2.62 [0.103]	45-105 [1.772-4.134] (1mm INCREMENTS)
TNSP-M10-25.0-L-TYPE	M10	25.0 [0.984]	20 [0.787]		2.25 [0.089]	38-105 [1.496-4.134] (1mm INCREMENTS)
TNSP-M8-19.0-L-TYPE	M8	19.0 [0.748]	14 [0.551]		1.88 [0.074]	30-105 [1.181-4.134] (1mm INCREMENTS)
TNSP-M8-15.9-L-TYPE		15.9 [0.626]				
TNSP-M6-12.7-L-TYPE	M6	12.7 [0.374]			1.50 [0.059]	22-105 [0.866-4.134] (1mm INCREMENTS)
TNSP-M5-12.7-L-TYPE	M5	9.5 [0.374]	10 [0.394]			
TNSP-M5-9.5-L-TYPE				1.20 [0.047]	19-105 [0.748-4.134] (1mm INCREMENTS)	
TNSP-M4-9.5-L-TYPE	M4	8.0 [0.315]			1.05 [0.041]	12.7-105 [0.500-4.134] (1mm INCREMENTS)
TNSP-M4-8.0-L-TYPE						
TNSP-M3-8.0-L-TYPE	M3	6.5 [0.256]			0.75 [0.030]	
TNSP-M3-6.5-L-TYPE						
TNSP-M2.5-8.0-L-TYPE	M2.5	8.0 [0.315]	6.0 [0.236]		0.68 [0.027]	10-105 [0.394-4.134] (1mm INCREMENTS)
TNSP-M2.5-6.5-L-TYPE						
TNSP-M2-8.0-L-TYPE	M2	8.0 [0.315]			0.60 [0.024]	
TNSP-M2-6.5-L-TYPE						