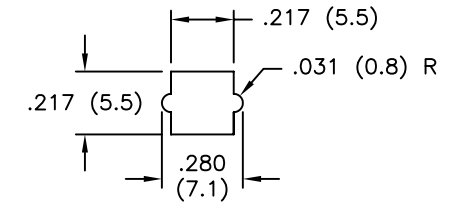
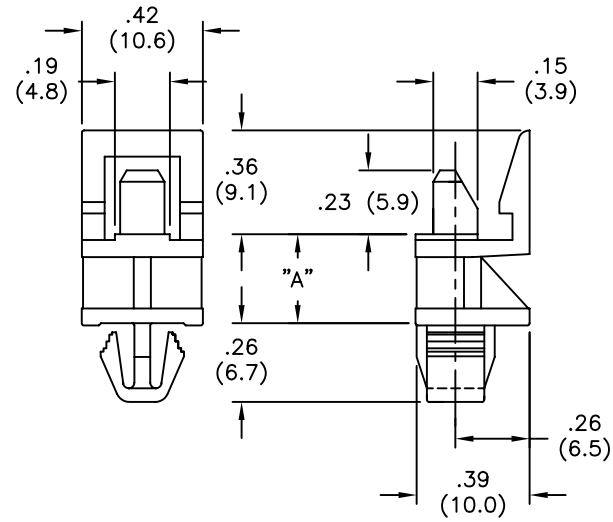
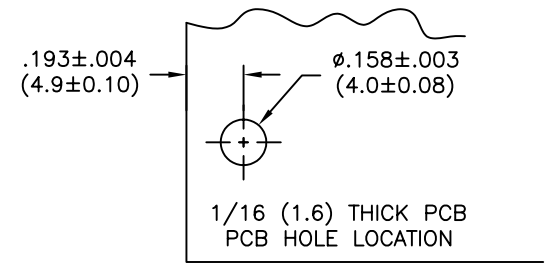


| PART NO. | "A" |
|----------------|-------------|
| PCBEHE2-4M-01 | .16 (4.0) |
| PCBEHE2-6M-01 | .24 (6.0) |
| PCBEHE2-8M-01 | .32 (8.0) |
| PCBEHE2-10M-01 | .39 (10.0) |
| PCBEHE2-12M-01 | .45 (12.0) |
| PCBEHE2-14M-01 | .55 (14.0) |
| PCBEHE2-25M-01 | .98 (25.0) |
| PCBEHE2-30M-01 | 1.18 (30.0) |

AVAILABLE BY SPECIAL ORDER ONLY



.047-.071 (1.2-1.8)
THICK CHASSIS
CHASSIS MOUNTING HOLE



NOTES

- MATERIAL: NYLON 6/6 (RMS-01).
FLAME RETARDANT NYLON (RMS-19),
AVAILABLE BY SPECIAL ORDER ONLY.
- COLOR: NATURAL.

| | | | | | | |
|---|------------------|--|------|----------------|-------|------------|
| TITLE: HINGED LOCKING CIRCUIT BOARD SUPPORT | | | | DWG IN IN (MM) | FINAL | |
| TOLERANCES UNLESS NOTED .XX=±.010 .XXX=±.005 FRAC=1/64 ANG=1° | FILE # PCBEHE2 | DWN: P.B. | APP: | PART # | | PRINT TYPE |
| | MAT'L: SEE NOTES | DT: 08-23-94 | DT: | SEE TABLE | | CA |
| | RE: RICHCO, INC. | RICHCO INC. PO BOX 804238, CHICAGO, 60680 (773) 539-4060 | | | | |

| REV | DESCRIPTION | ENGR | DATE |
|-----|------------------------------------|------|----------|
| D | SEE ECN #862 FOR CHANGES | SM | 10.04.04 |
| C | SEE ECN #519 FOR CHANGES | SM | 11.13.02 |
| B | UPDATED PRINT AND CHANGED FILE NO. | SM | 02.07.02 |
| A | MATERIAL (RMS-19) ADDED | JL | 2.18.00 |