

R1 - S1

Griffserien R1 und S1

Werkstoff und Oberfläche:
Griff aus Aluminium AlMgSi 0,5.
Antibakterielle Beschichtung in
RAL 9003.

Tragkraft:
min. 500 N.

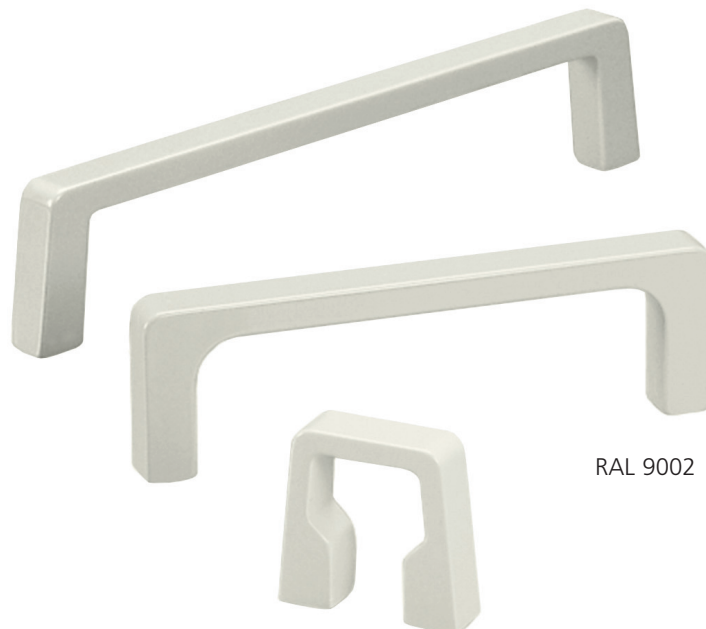
Hinweis:
Andere Abmessungen auf
Anfrage.

Handle Series R1 and S1

Material and surface:
Handle made of Aluminium
AlMgSi 0.5. Antibacterial
coating similar to RAL 9003.

Stress resistance:
min. 500 N.

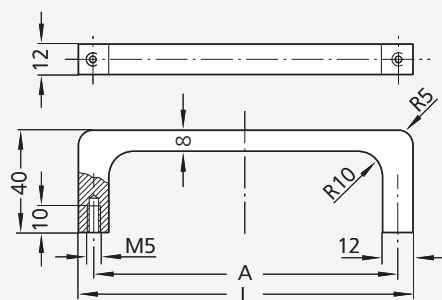
Note:
Other dimensions on request.



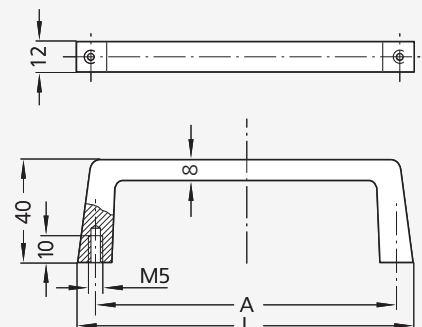
RAL 9002

Typenreihe R1 und S1,
Seiten 112, 113 und 114.
Type series R1 and S1
on pages 112, 113 and 114.

Typ R1



Typ S1



Clean Line

Antibakteriell Antibacterial



Typ	A	L	Clean Line	Antibakteriell
			RAL 9002 Bestell-Nr. / Order no.	RAL 9003 Bestell-Nr. / Order no.
R1	55	67	R1-12.055.9002	R1-12.055.9003A
	88	100	R1-12.088.9002	-
	120	132	R1-12.120.9002	R1-12.120.9003A
	180	192	R1-12.180.9002	R1-12.180.9003A
	235	247	R1-12.235.9002	-
S1	25	40	S1-12.025.9002	-
	55	69	S1-12.055.9002	S1-12.055.9003A
	88	102	S1-12.088.9002	-
	120	134	S1-12.120.9002	S1-12.120.9003A
	180	194	S1-12.180.9002	S1-12.180.9003A
	235	249	S1-12.235.9002	S1-12.235.9003A