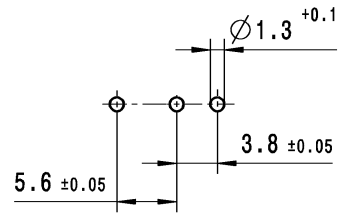
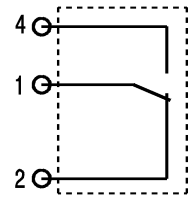


**Empfohlenes Lochbild**  
recommended hole pattern

fuer LPL- Anschlusse  
for PCB terminals



Schaltbild / circuit diagram



**Wechsler 1-polig mit Schleifkontakten**  
single pole change-over with sliding contacts

Schaltbetaetigungskraft Schliesser ≤ 2.2 N  
actuating force NO

Rueckstellkraft Schliesser ≥ 0.5 N  
release force NO

Durchgangswiderstand ≤ 500 mOhm  
contact resistance

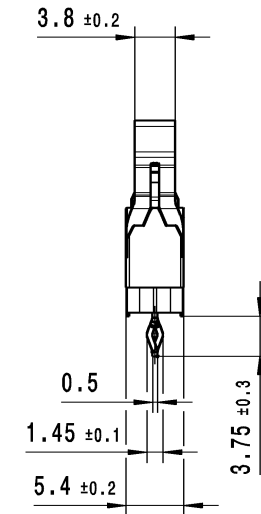
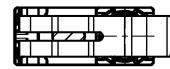
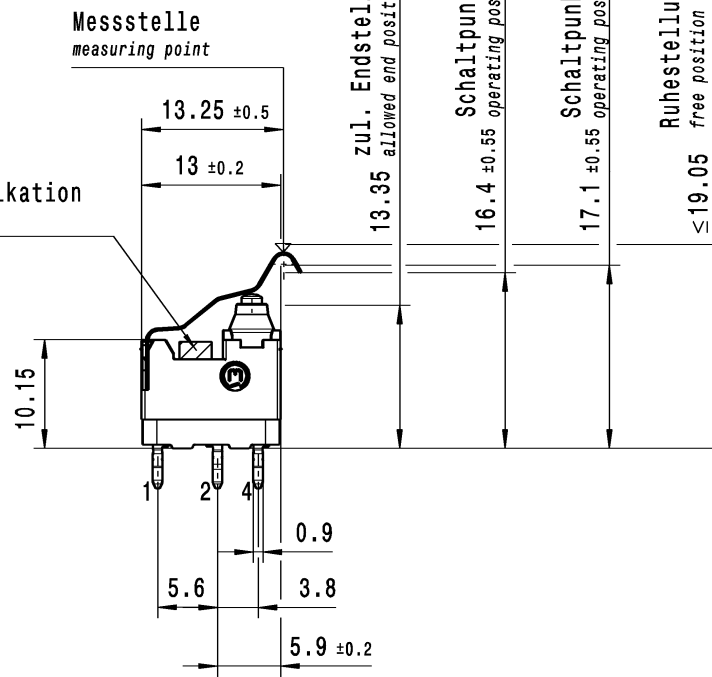
Kontakte vergoldet  
contacts gold plated

Schutzart nach EN 60529 IP 67  
protection according to EN 60529 IP 67

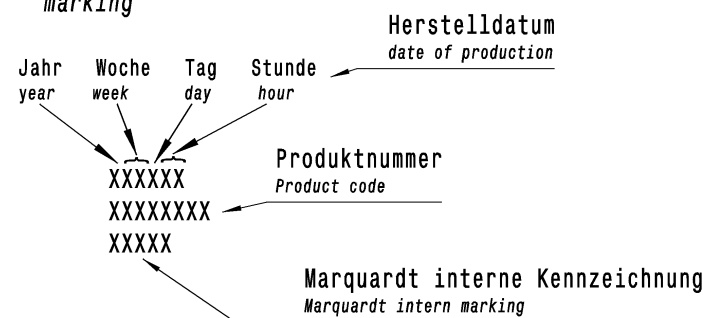
Schutzart Anschlusse nach EN 60529 IP 00  
protection terminals according to EN 60529 IP00

Weitere Angaben siehe Spezifikation 10650000  
further details see specification 10650000

Sperrbereich siehe Spezifikation  
keep out area see in specification



**Aufschrift**  
marking



|                                       |                    |  |    |             |                    |                 |                   |                            |                              |                     |  |
|---------------------------------------|--------------------|--|----|-------------|--------------------|-----------------|-------------------|----------------------------|------------------------------|---------------------|--|
|                                       |                    |  |    |             |                    |                 |                   |                            |                              | 1065.7100-02        |  |
|                                       |                    |  |    |             |                    |                 |                   |                            |                              | Art.-PI<br>ITEM-PI  |  |
| fuer Form und Lage FOR SHAPE AND LOC. | PROJEKTION         | Allgemeintoleranzen<br>UNTOLERANCED DIMENSIONS |    |             |                    | Pause COPY      | Blatt SHEET 01    | Typ K                      | Zeichn./DRAWING NO. 10657100 | Index g             |  |
| fuer Winkel FOR ANGLE ± 2°            | PROJEKTION         | Abmasse und Nennmassbereiche Angaben in mm     |    |             |                    | Original DIN A2 | Masstab SCALE 2:1 | MIKRO-SIGNALSCHALTER       |                              | micro signal switch |  |
|                                       |                    | ALL DIMENSIONS ARE IN MILLIMETRES              |    |             |                    | 0 10 20 30mm    |                   |                            |                              |                     |  |
| c                                     | 64814              | 12.10.09                                       | GR | g           | 100893             | 25.02.16        | SB                | CAD: CATIA_V5              |                              |                     |  |
| b                                     | 61580              | 04.12.08                                       | SB | f           | 86545              | 23.03.15        | SB                | gez./DRAWN BY 07.12.07 GR  |                              |                     |  |
| a                                     | 57523              | 21.04.08                                       | SB | e           | 76130              | 09.11.11        | SB                | gepr./CHECKED BY           |                              |                     |  |
|                                       | 54163              | 23.01.08                                       | GR | d           | 66337              | 20.04.10        | GR                | Ersatz fuer/REPLACEMENT OF |                              |                     |  |
| Ausg. ISSUE                           | Aenderung REVISION | gez. DRAWN BY                                  |    | Ausg. ISSUE | Aenderung REVISION | gez. DRAWN BY   |                   |                            |                              |                     |  |
| <b>MARQUARDT</b>                      |                    |  |    |             |                    |                 |                   |                            |                              |                     |  |

THIS DRAWING IS THE EXCLUSIVE PROPERTY OF MARQUARDT. WITHOUT THEIR CONSENT IT MAY NOT BE REPRODUCED OR GIVEN TO THIRD PARTIES.

CONFIDENTIAL

VERTRAULICH

Alle Rechte bei Marquardt, auch fuer den Fall von Schutzrechtsanmeldungen. Jede Veruegungsbefugnis, wie Kopier- und Weitergaberecht, bei uns.