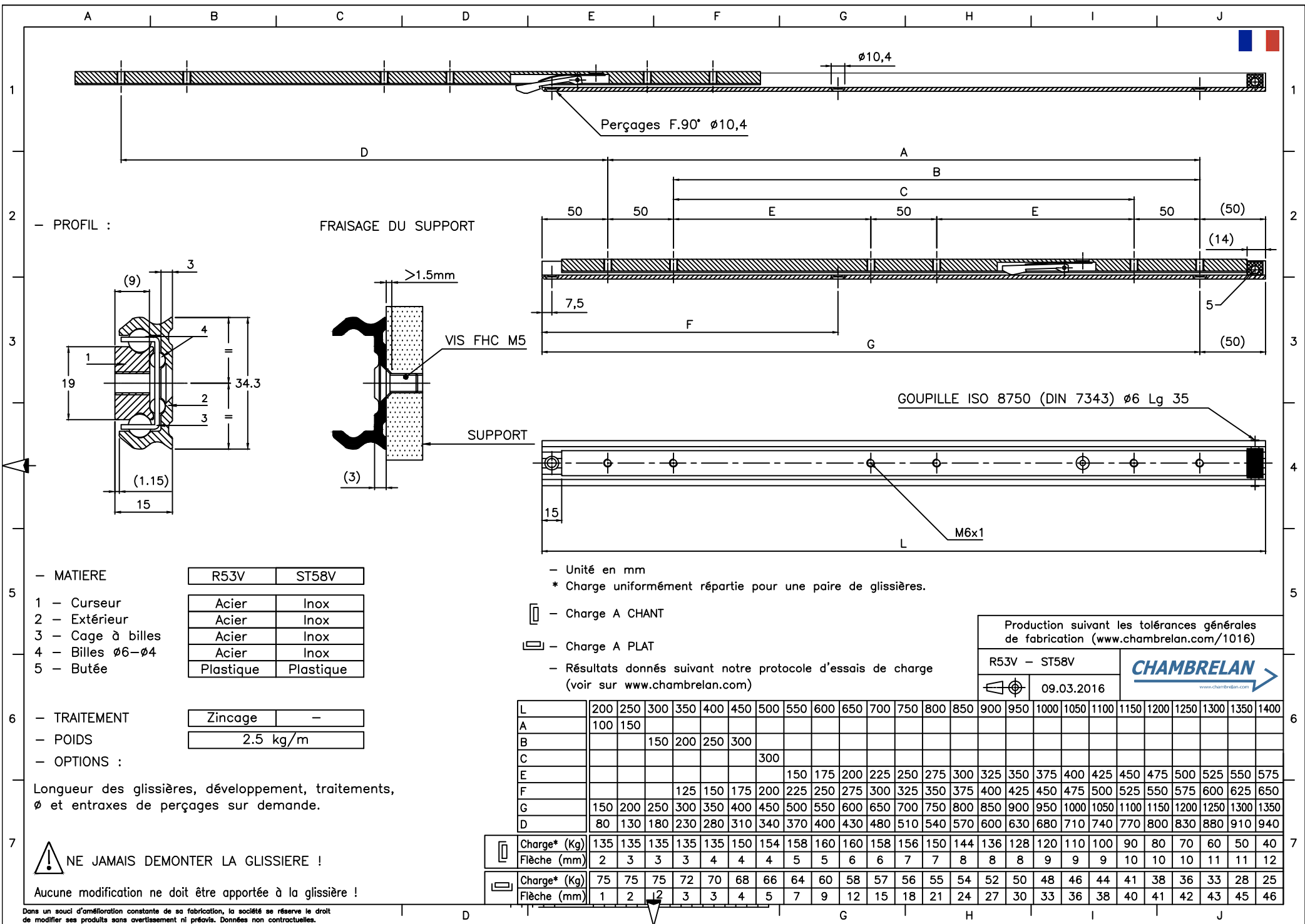


R53V ST58V

| | | | | |
|------------------------|-------------------|--------------------------|--|----|
| Acier zingué | Inox | Extension Partielle |  Français | 2 |
| Zinc plated steel | Stainless steel | Partial Extension |  English | 3 |
| Stahl silbern verzinkt | Edelstahl | Teilauszüge |  Deutsch | 4 |
| Pozinkovaná ocel | Nerezová ocel | částečný výsuv |  Český | 5 |
| Acero zincado | Acero inoxidable | Extensión Parcial |  Español | 6 |
| Acciaio zincato | Acciaio inox | Estensione parziale |  Italiano | 7 |
| Verzinkt staal | Roestvrij staal | Gedeeltelijk uittrekbaar |  Nederlands | 8 |
| Оцинковка | Нержавеющая сталь | Частичное выдвижение |  Русский | 9 |
| Stal ocynkowana | Stal nierdzewna | Wysuw ponad pełny |  Polski | 10 |





- Unité en mm
 * Charge uniformément répartie pour une paire de glissières.

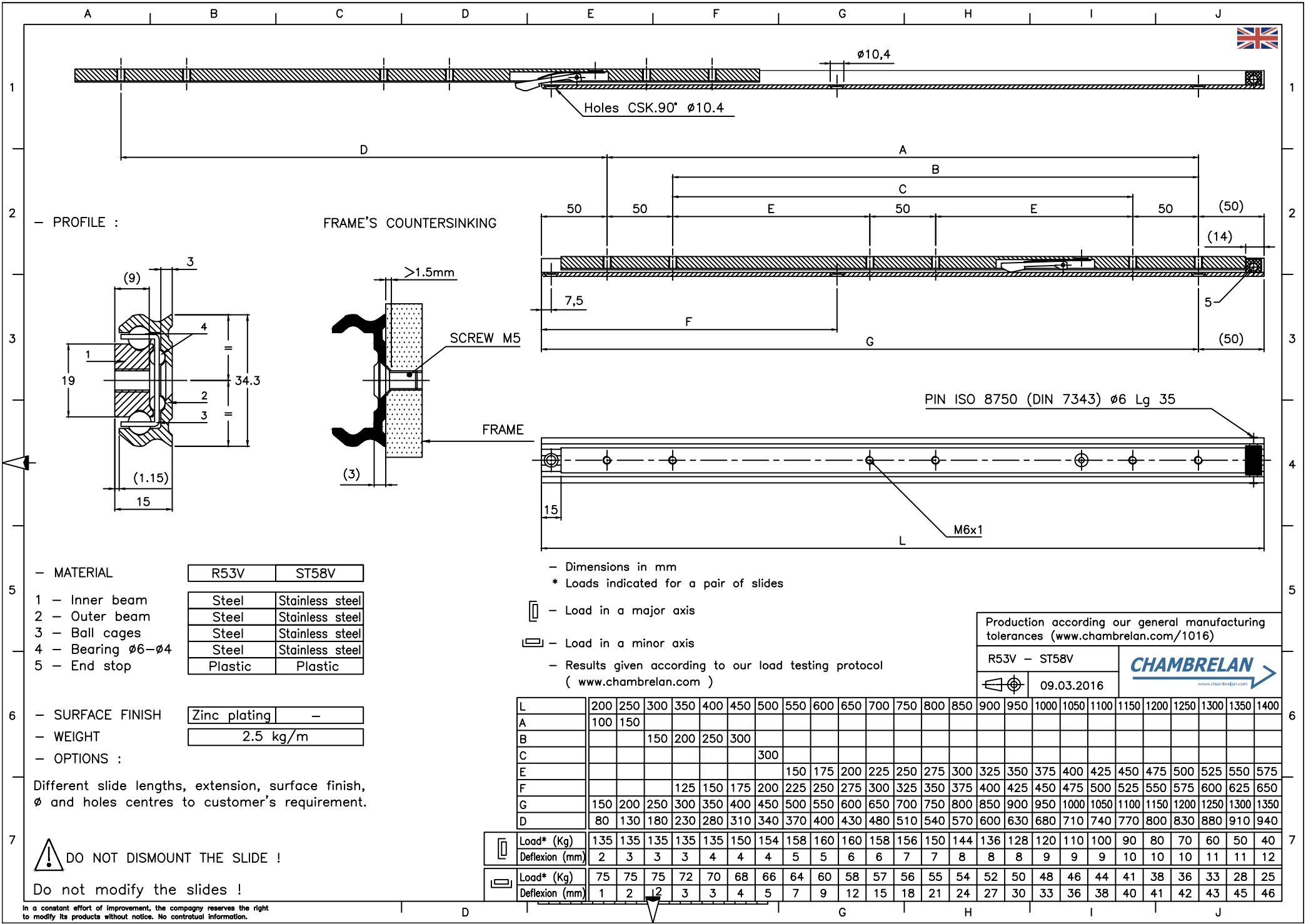
- Charge A CHANT
- Charge A PLAT

- Résultats donnés suivant notre protocole d'essais de charge (voir sur www.chambreлан.com)

Production suivant les tolérances générales de fabrication (www.chambreлан.com/1016)

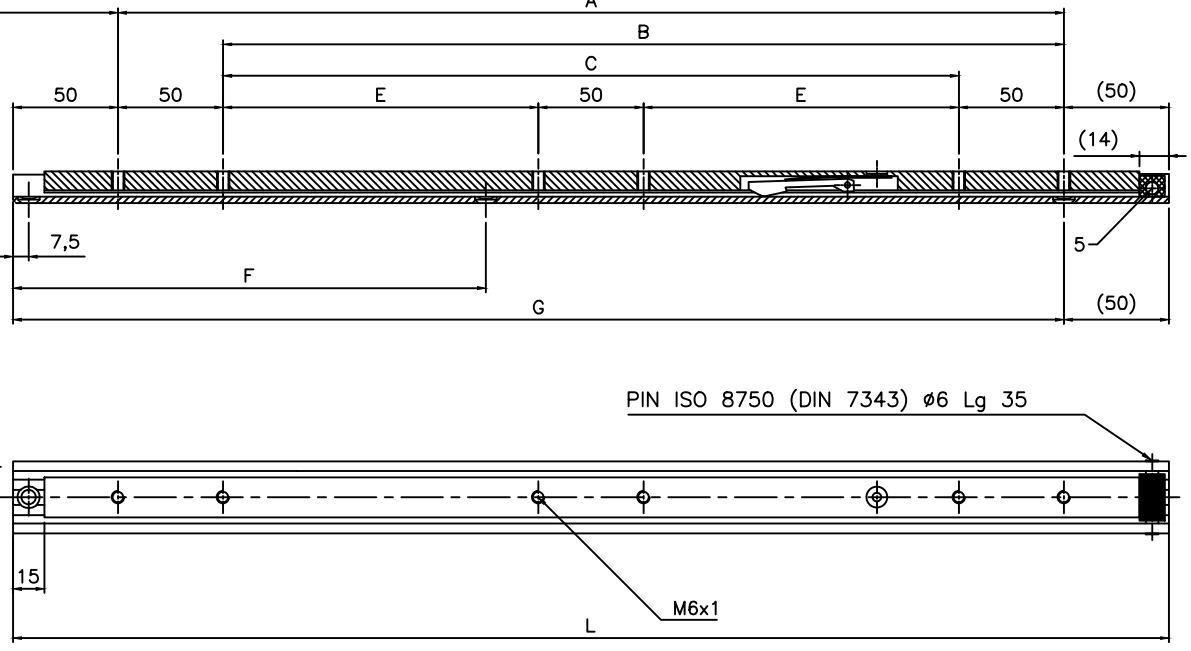
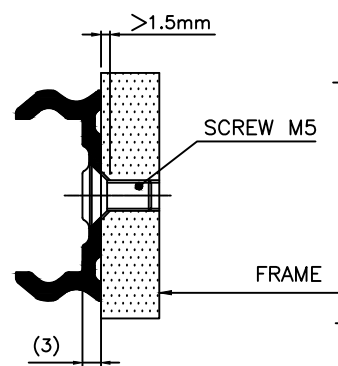
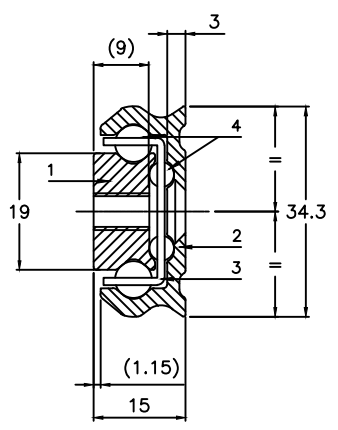
| | |
|--------------|--|
| R53V - ST58V | |
| 09.03.2016 | |

| | | | | | | | | | | | | | | | | | | | | | | | | | |
|--------------|-----|-----|-----|-----|-----|-----|-----|-----|-----|-----|-----|-----|-----|-----|-----|-----|------|------|------|------|------|------|------|------|------|
| L | 200 | 250 | 300 | 350 | 400 | 450 | 500 | 550 | 600 | 650 | 700 | 750 | 800 | 850 | 900 | 950 | 1000 | 1050 | 1100 | 1150 | 1200 | 1250 | 1300 | 1350 | 1400 |
| A | 100 | 150 | | | | | | | | | | | | | | | | | | | | | | | |
| B | | | 150 | 200 | 250 | 300 | | | | | | | | | | | | | | | | | | | |
| C | | | | | | | 300 | | | | | | | | | | | | | | | | | | |
| E | | | | | | | | 150 | 175 | 200 | 225 | 250 | 275 | 300 | 325 | 350 | 375 | 400 | 425 | 450 | 475 | 500 | 525 | 550 | 575 |
| F | | | | 125 | 150 | 175 | 200 | 225 | 250 | 275 | 300 | 325 | 350 | 375 | 400 | 425 | 450 | 475 | 500 | 525 | 550 | 575 | 600 | 625 | 650 |
| G | 150 | 200 | 250 | 300 | 350 | 400 | 450 | 500 | 550 | 600 | 650 | 700 | 750 | 800 | 850 | 900 | 950 | 1000 | 1050 | 1100 | 1150 | 1200 | 1250 | 1300 | 1350 |
| D | 80 | 130 | 180 | 230 | 280 | 310 | 340 | 370 | 400 | 430 | 480 | 510 | 540 | 570 | 600 | 630 | 680 | 710 | 740 | 770 | 800 | 830 | 880 | 910 | 940 |
| Charge* (Kg) | 135 | 135 | 135 | 135 | 135 | 150 | 154 | 158 | 160 | 160 | 158 | 156 | 150 | 144 | 136 | 128 | 120 | 110 | 100 | 90 | 80 | 70 | 60 | 50 | 40 |
| Flèche (mm) | 2 | 3 | 3 | 3 | 4 | 4 | 4 | 5 | 5 | 6 | 6 | 7 | 7 | 8 | 8 | 8 | 8 | 9 | 9 | 10 | 10 | 10 | 11 | 11 | 12 |
| Charge* (Kg) | 75 | 75 | 75 | 72 | 70 | 68 | 66 | 64 | 60 | 58 | 57 | 56 | 55 | 54 | 52 | 50 | 48 | 46 | 44 | 41 | 38 | 36 | 33 | 28 | 25 |
| Flèche (mm) | 1 | 2 | 2 | 3 | 3 | 4 | 5 | 7 | 9 | 12 | 15 | 18 | 21 | 24 | 27 | 30 | 33 | 36 | 38 | 40 | 41 | 42 | 43 | 45 | 46 |



— PROFILE :

FRAME'S COUNTERSINKING



— MATERIAL

| | | |
|--------------------------------|---------|-----------------|
| | R53V | ST58V |
| 1 - Inner beam | Steel | Stainless steel |
| 2 - Outer beam | Steel | Stainless steel |
| 3 - Ball cages | Steel | Stainless steel |
| 4 - Bearing ϕ 6- ϕ 4 | Steel | Stainless steel |
| 5 - End stop | Plastic | Plastic |

— SURFACE FINISH

| | |
|--------------|---|
| Zinc plating | — |
| 2.5 kg/m | |

— WEIGHT

— OPTIONS :

Different slide lengths, extension, surface finish, ϕ and holes centres to customer's requirement.

— Dimensions in mm
* Loads indicated for a pair of slides

— Load in a major axis
 — Load in a minor axis

— Results given according to our load testing protocol (www.chambrelan.com)

Production according our general manufacturing tolerances (www.chambrelan.com/1016)

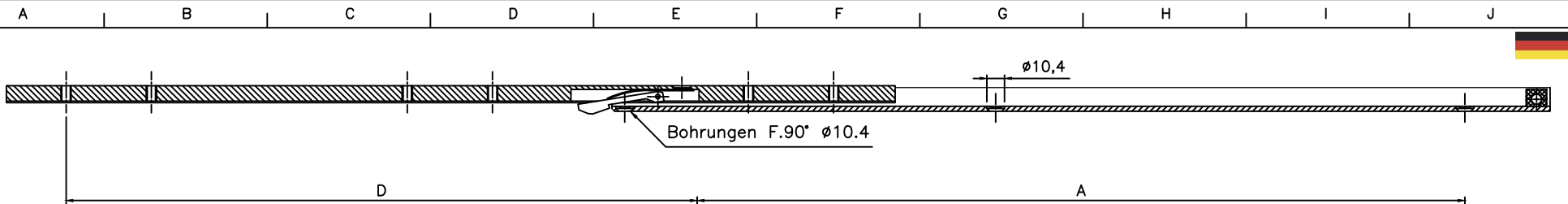
| | |
|--------------|--|
| R53V - ST58V | |
| 09.03.2016 | |

| | | | | | | | | | | | | | | | | | | | | | | | | | | |
|----------------|-----|-----|-----|-----|-----|-----|-----|-----|-----|-----|-----|-----|-----|-----|-----|-----|------|------|------|------|------|------|------|------|------|--|
| L | 200 | 250 | 300 | 350 | 400 | 450 | 500 | 550 | 600 | 650 | 700 | 750 | 800 | 850 | 900 | 950 | 1000 | 1050 | 1100 | 1150 | 1200 | 1250 | 1300 | 1350 | 1400 | |
| A | 100 | 150 | | | | | | | | | | | | | | | | | | | | | | | | |
| B | | | 150 | 200 | 250 | 300 | | | | | | | | | | | | | | | | | | | | |
| C | | | | | | | 300 | | | | | | | | | | | | | | | | | | | |
| E | | | | | | | | 150 | 175 | 200 | 225 | 250 | 275 | 300 | 325 | 350 | 375 | 400 | 425 | 450 | 475 | 500 | 525 | 550 | 575 | |
| F | | | | 125 | 150 | 175 | 200 | 225 | 250 | 275 | 300 | 325 | 350 | 375 | 400 | 425 | 450 | 475 | 500 | 525 | 550 | 575 | 600 | 625 | 650 | |
| G | 150 | 200 | 250 | 300 | 350 | 400 | 450 | 500 | 550 | 600 | 650 | 700 | 750 | 800 | 850 | 900 | 950 | 1000 | 1050 | 1100 | 1150 | 1200 | 1250 | 1300 | 1350 | |
| D | 80 | 130 | 180 | 230 | 280 | 310 | 340 | 370 | 400 | 430 | 480 | 510 | 540 | 570 | 600 | 630 | 680 | 710 | 740 | 770 | 800 | 830 | 880 | 910 | 940 | |
| Load* (Kg) | 135 | 135 | 135 | 135 | 135 | 150 | 154 | 158 | 160 | 160 | 158 | 156 | 150 | 144 | 136 | 128 | 120 | 110 | 100 | 90 | 80 | 70 | 60 | 50 | 40 | |
| Deflexion (mm) | 2 | 3 | 3 | 3 | 4 | 4 | 4 | 5 | 5 | 6 | 6 | 7 | 7 | 8 | 8 | 8 | 9 | 9 | 10 | 10 | 10 | 10 | 11 | 11 | 12 | |
| Load* (Kg) | 75 | 75 | 75 | 72 | 70 | 68 | 66 | 64 | 60 | 58 | 57 | 56 | 55 | 54 | 52 | 50 | 48 | 46 | 44 | 41 | 38 | 36 | 33 | 28 | 25 | |
| Deflexion (mm) | 1 | 2 | 2 | 3 | 3 | 4 | 5 | 7 | 9 | 12 | 15 | 18 | 21 | 24 | 27 | 30 | 33 | 36 | 38 | 40 | 41 | 42 | 43 | 45 | 46 | |

DO NOT DISMOUNT THE SLIDE !

Do not modify the slides !

In a constant effort of improvement, the company reserves the right to modify its products without notice. No contractual information.



Bohrungen F.90° ϕ 10.4

ϕ 10,4

D

A

B

C

E

50

50

(50)

(14)

7,5

G

(50)

SPIRAL-SPANNSTIFT
ISO 8750 (DIN 7343) ϕ 6 Lg 35

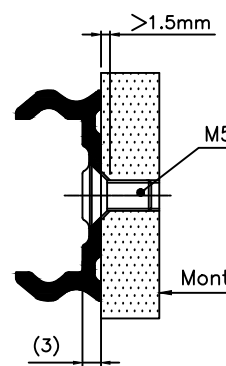
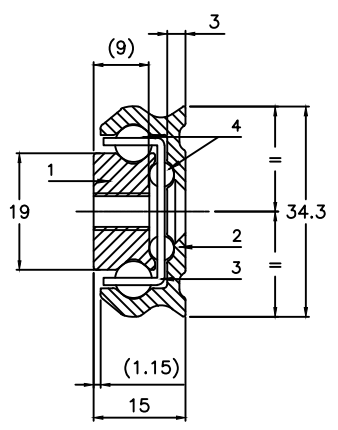
15

L

M6x1

PROFIL :

Ansenken der Montagefläche



Montagefläche

(3)

Material

| | | |
|-------------------------------|---------|-----------|
| | R53V | ST58V |
| 1 - Kleinschiene | Stahl | Edelstahl |
| 2 - Außenschiene | Stahl | Edelstahl |
| 3 - Kugelleisten | Stahl | Edelstahl |
| 4 - Kugeln ϕ 6- ϕ 4 | Stahl | Edelstahl |
| 5 - Anschlag | Plastik | Plastik |

Maße in mm

* Belastungsangaben gelten pro Paar



Tragfähigkeit radial



Tragfähigkeit axial

Resultate nach unserem üblichen Testverfahren
(siehe unter www.chambreilan.com)

Herstellung nach unseren allgemeinen
Herstellungstoleranzen (siehe www.chambreilan.com/1016)

R53V - ST58V
09.03.2016



Oberflächenbehandlung

| | |
|------------------|---|
| silbern verzinkt | - |
|------------------|---|

Gewicht

| |
|----------|
| 2.5 kg/m |
|----------|

mögliche Sonderanfertigungen :

Sonderlängen, Oberflächenbehandlungen,
 ϕ Bohrungen und Lochabstände.

| | | | | | | | | | | | | | | | | | | | | | | | | | | |
|---|-----|-----|-----|-----|-----|-----|-----|-----|-----|-----|-----|-----|-----|-----|-----|-----|------|------|------|------|------|------|------|------|------|--|
| L | 200 | 250 | 300 | 350 | 400 | 450 | 500 | 550 | 600 | 650 | 700 | 750 | 800 | 850 | 900 | 950 | 1000 | 1050 | 1100 | 1150 | 1200 | 1250 | 1300 | 1350 | 1400 | |
| A | 100 | 150 | | | | | | | | | | | | | | | | | | | | | | | | |
| B | | | 150 | 200 | 250 | 300 | | | | | | | | | | | | | | | | | | | | |
| C | | | | | | | 300 | | | | | | | | | | | | | | | | | | | |
| E | | | | | | | | 150 | 175 | 200 | 225 | 250 | 275 | 300 | 325 | 350 | 375 | 400 | 425 | 450 | 475 | 500 | 525 | 550 | 575 | |
| F | | | | 125 | 150 | 175 | 200 | 225 | 250 | 275 | 300 | 325 | 350 | 375 | 400 | 425 | 450 | 475 | 500 | 525 | 550 | 575 | 600 | 625 | 650 | |
| G | 150 | 200 | 250 | 300 | 350 | 400 | 450 | 500 | 550 | 600 | 650 | 700 | 750 | 800 | 850 | 900 | 950 | 1000 | 1050 | 1100 | 1150 | 1200 | 1250 | 1300 | 1350 | |
| D | 80 | 130 | 180 | 230 | 280 | 310 | 340 | 370 | 400 | 430 | 480 | 510 | 540 | 570 | 600 | 630 | 680 | 710 | 740 | 770 | 800 | 830 | 880 | 910 | 940 | |

| | | | | | | | | | | | | | | | | | | | | | | | | | | |
|----------------------|----------------|-----|-----|-----|-----|-----|-----|-----|-----|-----|-----|-----|-----|-----|-----|-----|-----|-----|-----|-----|----|----|----|----|----|----|
| Tragfähigkeit radial | Belastung*(Kg) | 135 | 135 | 135 | 135 | 135 | 150 | 154 | 158 | 160 | 160 | 158 | 156 | 150 | 144 | 136 | 128 | 120 | 110 | 100 | 90 | 80 | 70 | 60 | 50 | 40 |
| | Durchbiegung | 2 | 3 | 3 | 3 | 4 | 4 | 4 | 4 | 5 | 5 | 6 | 6 | 7 | 7 | 8 | 8 | 8 | 9 | 9 | 10 | 10 | 10 | 11 | 11 | 12 |
| Tragfähigkeit axial | Belastung*(Kg) | 75 | 75 | 75 | 72 | 70 | 68 | 66 | 64 | 60 | 58 | 57 | 56 | 55 | 54 | 52 | 50 | 48 | 46 | 44 | 41 | 38 | 36 | 33 | 28 | 25 |
| | Durchbiegung | 1 | 2 | 2 | 3 | 3 | 4 | 5 | 7 | 9 | 12 | 15 | 18 | 21 | 24 | 27 | 30 | 33 | 36 | 38 | 40 | 41 | 42 | 43 | 45 | 46 |

! DIE SCHIENEN NICHT DEMONTIEREN !
DIE TELESKOPSCHIENE DARF NICHT VERÄNDERT WERDEN!

Um die ständige Verbesserung unserer Schienen zu gewährleisten, behalten wir uns ohne Voranmeldung technische Änderungen vor. Keine vertragsmässigen Informationen.

D

G

H

I

J