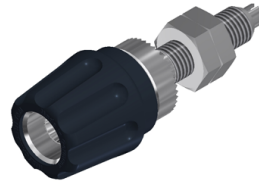




Sockets

PKN 10 B



Product	PKN 10 B
description	Pole terminal with claw edge and captive insulated head. 6 mm diameter nickel-plated brass threaded bolt with 2.6 mm diameter transverse hole. For non-rotating installation in equipment chassis and switchpanels.
article-no. / *colour	9301171xx <div style="display: flex; justify-content: space-around; align-items: center;"> <div style="text-align: center;">  00 black </div> <div style="text-align: center;">  01 red </div> </div> <div style="text-align: right; border: 1px solid black; padding: 2px; margin-top: 10px;">Ni</div>
drawing	
technical data	
connection	M6 thread, solder connection
rated voltage ⁽¹⁾	30 VAC / 60 VDC
measurement cat. acc. to IEC 61010	O ⁽³⁾
rated current ⁽¹⁾ (consider derating curve)	63 A
material socket	brass, nickel plated
housing material	PA
temperature range acc. To IEC61010 ⁽²⁾	-25 °C to +100 °C
standard	IEC 61010

4 mm system

⁽¹⁾ for normal environmental conditions -5°C to +40°C

⁽²⁾ contact the manufacturer for applications at deviating temperature ranges

⁽³⁾ Other circuits that are not directly connected to mains

stand: 30.07.2018