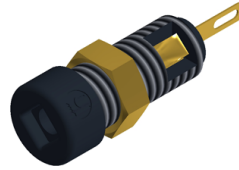


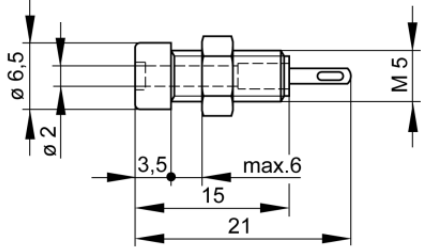


Sockets

MBI 1 Au



| Product | MBI 1 Au |
|---|--|
| description | 2 mm diameter miniature socket, insulated, gold-plated copper beryllium contact (spring-loaded), with solder connection. Suitable for installation in equipment chassis and switch panels up to a maximum wall thickness of 5 mm. |
| article-no. / *colour | 9303087xx <div style="display: flex; justify-content: space-around; align-items: center;"> <div style="text-align: center;">  00 black </div> <div style="text-align: center;">  01 red </div> </div> <div style="text-align: right; border: 1px solid black; padding: 2px; margin-top: 5px;">Au</div> |
| drawing |  |
| technical data | |
| connection | solder connection |
| rated voltage ⁽¹⁾ | 30 VAC / 60 VDC |
| measurement cat. acc. to IEC 61010 | O ⁽³⁾ |
| rated current ⁽¹⁾ (consider derating curve) | 6 A |
| material socket | SKS_KUPFER-BERYLLIUM-VERGOLDET |
| housing material | PA |
| temperature range acc. To IEC61010 ⁽²⁾ | -20 °C to +60 °C |
| standard | IEC 61010 |

2 mm system

⁽¹⁾ for normal environmental conditions -5°C to +40°C

⁽²⁾ contact the manufacturer for applications at deviating temperature ranges

⁽³⁾ Other circuits that are not directly connected to mains

stand: 30.07.2018