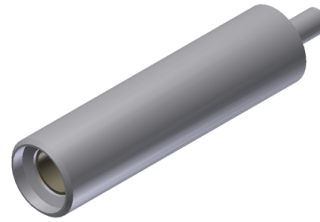
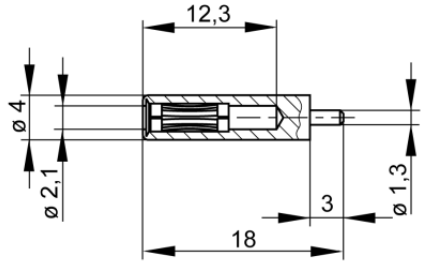


Sockets

**MBU 2**



Product	MBU 2
description	2 mm diameter miniature socket for soldering into printed boards. Fits MST 3, MVL 2/...and MST 201. This socket is used in connection with the MST 201 connector pin in stacking populated printed boards. Tinplated brass socket body.
Articlenummer	931337000 <span style="float: right; border: 1px solid black; padding: 2px;">Sn</span>
drawing	
	
technical data	
connection	solder connection
rated voltage <sup>(1)</sup>	30 VAC / 60 VDC
measurement cat. acc. to IEC 61010	O <sup>(3)</sup>
rated current <sup>(1)</sup> (consider derating curve)	6 A
material socket	brass, tin plated
standard	IEC 61010

2 mm system

<sup>(1)</sup> for normal environmental conditions -5°C to +40°C

<sup>(3)</sup> Other circuits that are not directly connected to mains

stand: 26.07.2018