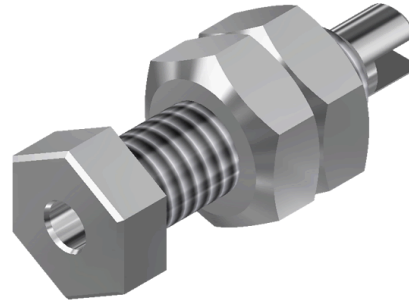
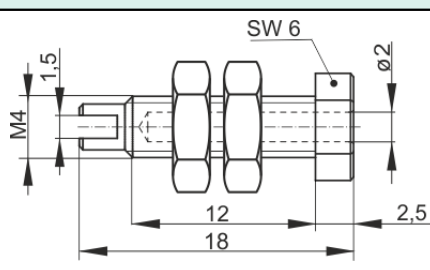


## Sockets

### MBU 10



Product	MBU 10
description	Unsprung 2 mm built-in socket, compatible with 2 mm spring-loaded plug. Suitable for installation in equipment chassis and switch panels up to a wall thickness of 6 mm.
Articlenummer	938441000 <span style="float: right; border: 1px solid black; padding: 2px;">Ni</span>
drawing	
technical data	
connection	M4 thread, solder connection
rated voltage <sup>(1)</sup>	30 VAC / 60 VDC
measurement cat. acc. to IEC 61010	O <sup>(3)</sup>
rated current <sup>(1)</sup> (consider derating curve)	6 A
material socket	brass, nickel plated
temperature range acc. To IEC61010 <sup>(2)</sup>	-15 °C to +100 °C
standard	IEC 61010

2 mm F system

<sup>(1)</sup> for normal environmental conditions -5°C to +40°C

<sup>(2)</sup> contact the manufacturer for applications at deviating temperature ranges

<sup>(3)</sup> Other circuits that are not directly connected to mains

stand: 31.08.2018