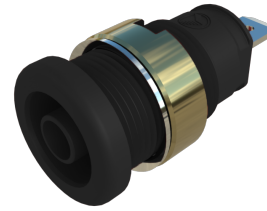
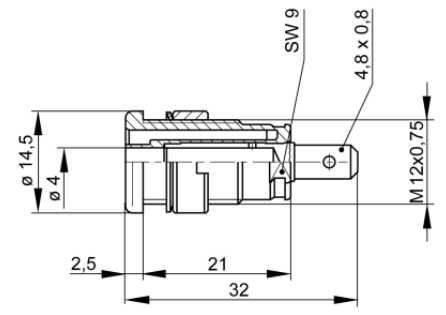


## Sockets

### SEB 2610 F4,8 Ni



<b>Product</b>	<b>SEB 2610 F4,8 Ni</b>
description	Safety built-in socket, 4 mm diameter, contact-protected, with 4.8 x 0.8 tab connector complying with DIN 46 244, nickel-plated brass. For installation into switchpanels and equipment chassis with wall thicknesses up to 6 mm. Installation hole: 12.2 mm diameter, Tightening torque: 50 Ncm, Accessory: assembly tool MW SEB
operating instruction	BA451
article-no. / *colour	9723552xx <div style="display: flex; justify-content: space-around; align-items: center;"> <div style="text-align: center;">● 00 black</div> <div style="text-align: center;">● 01 red</div> <div style="text-align: center;">● 02 blue</div> <div style="text-align: center;">● 03 yellow</div> <div style="text-align: center;">● 04 green</div> </div> <div style="text-align: right; margin-top: 5px;"><span style="border: 1px solid black; padding: 2px;">Ni</span></div>
<b>drawing</b>	
<b>technical data</b>	
connection	flat connector 4.8 x 0.8 mm
rated voltage <sup>(1)</sup>	AC/DC 1000 V
measurement cat. acc. to IEC 61010	CAT III
rated current <sup>(1)</sup> (consider derating curve)	25 A
material socket	brass, nickel plated
housing material	PA
temperature range acc. To IEC61010 <sup>(2)</sup>	-40 °C to +80 °C

4 mm safety system

inflammability class acc. to UL 94 (only valid for basic material of housing)	V-2
--	-----

<sup>(1)</sup> for normal environmental conditions -5°C to +40°C

<sup>(2)</sup> contact the manufacturer for applications at deviating temperature ranges

stand: 09.06.2022