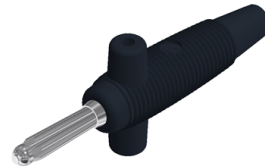





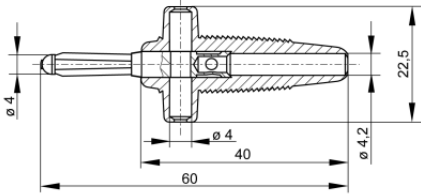


## Plugs

### BUELA 300 K



Product	BUELA 300 K
description	Multiple-spring wire plug, shatter-proof, flexible insulated sleeve with transverse hole. Lateral supports provide protection against contact when plugged in at right angles. The tapering sleeve end also serves as kinking protection for the lead. Solder connection up to maximum cable cross-section of 2.5 mm <sup>2</sup> .
article-no. / *colour	9316671xx <div style="display: flex; justify-content: space-around; align-items: center;"> <div style="text-align: center;"> 00 black</div> <div style="text-align: center;"> 01 red</div> <div style="text-align: center;"> 02 blue</div> <div style="text-align: center;"> 03 yellow</div> <div style="text-align: center;"> 04 green</div> </div> <div style="text-align: right; border: 1px solid black; padding: 2px; margin-top: 5px;">Ni</div>
drawing	
technical data	
connection	solder connection
rated voltage <sup>(1)</sup>	30 VAC / 60 VDC
measurement cat. acc. to IEC 61010	O <sup>(3)</sup>
rated current <sup>(1)</sup> (consider derating curve)	30 A
material plug	brass, nickel plated
housing material	PVC-P
temperature range acc. To IEC61010 <sup>(2)</sup>	-25 °C to +70 °C
standard	IEC 61010

4 mm system

<sup>(1)</sup> for normal environmental conditions -5°C to +40°C

<sup>(2)</sup> contact the manufacturer for applications at deviating temperature ranges

<sup>(3)</sup> Other circuits that are not directly connected to mains

stand: 30.07.2018