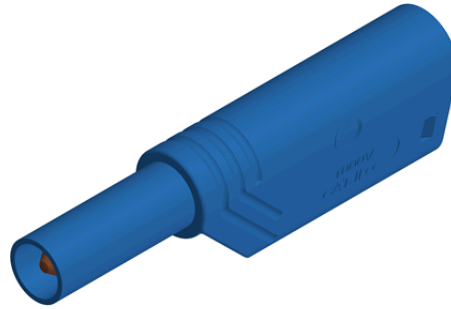
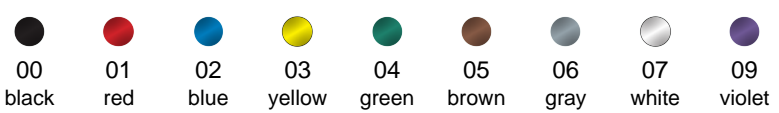
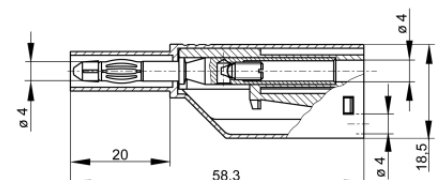


Plugs

LAS S WS Au



Product	LAS S WS Au
description	Safety connector for tower construction with screw connection for leads from 0.5 mm ² to 1.5 mm ² , outer diameter of lead max. 4.2 mm. Plug 4 mm with caged spring, rigid socket 4 mm, 1000 V-system. Simple assembly by "Click-System".
article-no. / *colour	9340997xx  Au
drawing	
technical data	
connection	screw terminal
rated voltage ⁽¹⁾	AC/DC 1000 V
measurement cat. acc. to IEC 61010	CAT II
rated current ⁽¹⁾ (consider derating curve)	24 A
material plug	brass, gold plated
housing material	PA
temperature range acc. To IEC61010 ⁽²⁾	-15 °C to +70 °C
flammability class acc. to UL 94 (only valid for basic material of housing)	V-2
standard	IEC 61010

4 mm safety system

⁽¹⁾ for normal environmental conditions -5°C to +40°C

⁽²⁾ contact the manufacturer for applications at deviating temperature ranges

stand: 22.06.2016