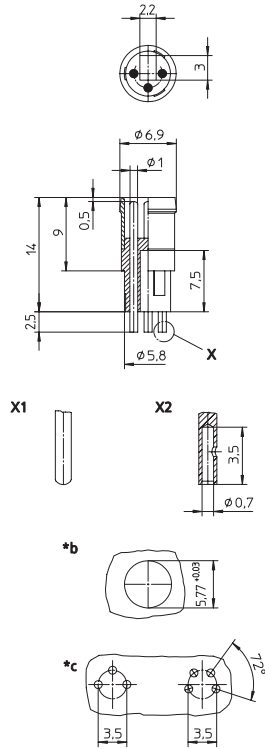


RSMEJ

RSMEH

Einbausteckverbinder, M8-Stecker für Sensoren, mit Rastverschluss, Leuchtring, kurze Anschlusskontakte, Hohlstifte (RSMEJ) bzw. Massivstifte (RSMEH) auf der Lötseite

Receptacle connector, M8 male connector for sensors, with snap-in joint, translucent ring, short solder contacts, hollow contacts (RSMEJ) or solid contacts (RSMEH) on solder side



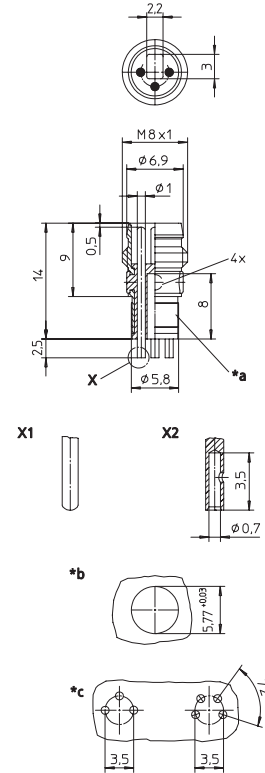
- *X1 massiv solid
- *X2 hohl hollow
- *b Einbauöffnung cut out
- *c Lochbild in der Leiterplatte hole pattern in printed circuit board

RSMED

RSMEB

Einbausteckverbinder, M8-Stecker für Sensoren, mit kombiniertem Rast-/Schraubverschluss, 4 Leuchtfenster, Einbauöffnung für LED, kurze Anschlusskontakte, Hohlstifte (RSMED) bzw. Massivstifte (RSMEB) auf der Lötseite

Receptacle connector, M8 male connector for sensors, with combined snap-in/threaded joint, 4 light indicator windows, mounting hole for LED, short solder contacts, hollow contacts (RSMED) or solid contacts (RSMEB) on solder side



- *X1 massiv solid
- *X2 hohl hollow
- *b Einbauöffnung cut out
- *c Lochbild in der Leiterplatte hole pattern in printed circuit board

Pinbelegung
Pin assignment

3-polig
3 poles














4-polig
4 poles



Technische Daten	
Umgebungstemperatur	-25°C / +80°C
Werkstoffe	
Gehäuse / Griffkörper	CuZn, vernickelt
Kontaktträger	PA
Kontakt	CuZn, unternickelt und 0,8 µm vergoldet
Mechanische Daten	
Anschlussart	Lötanschluss
Anschließbarer Leiter	max. 0,25 mm ²
Elektrische Daten	
Durchgangswiderstand	≤ 5 mΩ
Nennstrom bei 40°C	4 A
Nennspannung	60 V
Bemessungsspannung	63 V
Prüfspannung	1,5 kV eff. / 60 s
Isolationswiderstand	> 10 ⁹ Ω
Verschmutzungsgrad	3

Technical data	
Operating temperature range	-25°C / +80°C
Materials	
Housing / Molded body	CuZn, nickel-plated
Insert	PA
Contact	CuZn, pre-nickel and 0.8 microns gold-plated
Mechanical data	
Mode of connection	solder connection
Connectable conductor	max. 0.25 mm ²
Electrical data	
Contact resistance	≤ 5 mΩ
Nominal current at 40°C	4 A
Nominal voltage	60 V
Rated voltage	63 V
Test voltage	1.5 kV eff. / 60 s
Insulation resistance	> 10 ⁹ Ω
Pollution degree	3

Bestellbezeichnung Designation		Polzahl Poles	Kontakt (Lötseite) Contact (Soldering side)
RSMEJ 3	 RSMED 3	 	3 Hohlstift hollow contact
RSMEH 3	 RSMEB 3	 	3 Massivstift solid contact
	RSMED 4	 	4 Hohlstift hollow contact
RSMEH 4	 RSMEB 4	 	4 Massivstift solid contact