

M12-Round-Plug Connector to DIN Valve Connector, Double-Ended Cordsets

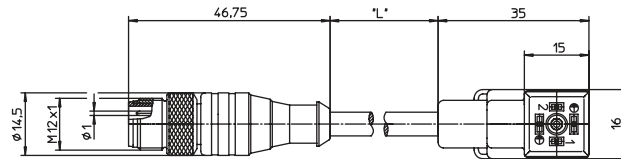
RST-VCD | RST-VC



RST-VCD 1A-1-3

Actuator cordset, double-ended, M12 male connector with self-locking threaded joint and valve connector according to

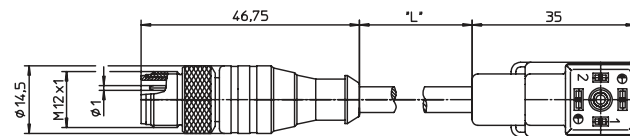
– DIN EN 175301-803, form C (8.0 mm) –



RST-VC 1A-1-3

Actuator cordset, double-ended, M12 male connector with self-locking threaded joint and valve connector similar to

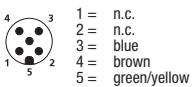
– DIN EN 175301-803, industry standard form C, (9.4 mm) –



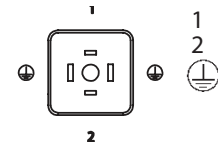
Pin Assignments

M12

3 poles



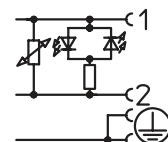
VCD 1A / VC 1A



1 = brown
2 = blue
= green/yellow

Wiring Diagram

VCD 1A / VC 1A





M12-Round-Plug Connector to DIN Valve Connector, Double-Ended Cordsets

RST-VCD | RST-VC

Technical Data

Environmental

Degree of protection IP 67 / NEMA 6P
 Operating temperature range -25°C (-13°F) / +80°C (+176°F)

Mechanical (RST)

Housing / Molded body TPU
 Insert TPU
 Contact CuZn, pre-nickeled and 0.8 microns gold-plated
 Coupling nut CuZn, nickel-plated

Mechanical (VAD)

Housing / Molded body TPU
 Insert PBT
 Contact CuZn, nickel/tin plated

Electrical



Nominal current at 40°C 4 A
 Rated voltage 24 V AC/DC
 Test voltage 1.5 kV eff. / 60 s
 Insulation resistance > 10⁹ Ω
 Pollution degree 3

Varistor data (VCD / VC)

Nominal voltage 47 V at 0.1 mA
 typ. limiting voltage 110 V at 5 A
 max. pulse energy 0.9 Ws
 max. continuous power loss 0.01 W
 (standard impulse 10/1000us)

Cable Specifications

Cable No.	Outer Jacket	Gauge	Jacket Color	OD	Agency Approvals
226	PUR, halogen-free	3 x 0.50 mm ²	Black	4.6 mm	UL: AWM 21198 / CSA: AWM I/II A/B
241	PUR, halogen-free, spark-proof	3 x 0.50 mm ²	Black	5.0 mm	UL: AWM 21198 / CSA: AWM I/II A/B

Part Number	Pins	Outer Jacket	Standard Cable Lengths	Characteristics
RST 5-3-VCD 1A-1-3-226/... M RST 5-3-VC 1A-1-3-226/... M	3	PUR, halogen-free	0.3 M / 0.6 M / 1 M / 1.5 M / 2 M / 5 M	 
RST 5-3-VCD 1A-1-3-241/... M		PUR, halogen-free, spark-proof	0.3 M / 0.6 M / 1 M / 1.5 M / 2 M / 5 M	