



### Elektrische Werte

\* Bemessungsstrom 64 A  
Durchgangswiderstand < 1 mOhm

### Werkstoff

Kontakt Messing, vergoldet

### Anschluß

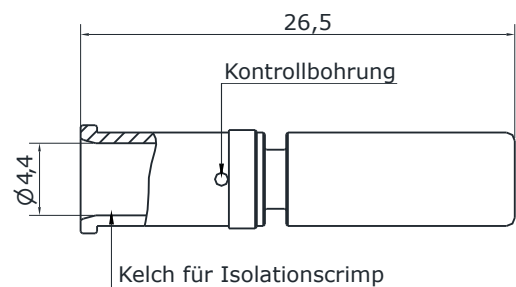
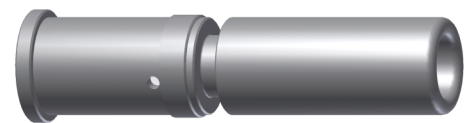
Anschlußart crimp  
Anschlußbereich 6,0 mm<sup>2</sup> - 10,0 mm<sup>2</sup>  
Abisolierlänge 10 mm  
Crimpeinstellungen sind individuell zu wählen

### Mechanische Werte

Steckzyklen 500

### Werkzeuge (nicht im Lieferumfang enthalten)

analoge Crimpzange Best.-Nr. C0.008.00  
(Positioniereinsatz für 3,6mm Kontakte Best.-Nr. C0.249.00)



### Hauptabmessungen

Kontaktbuchse





### Electrical Data

\*nominal current 64 A  
contact resistance < 1 mOhm

### Material

contact brass, gold plated

### Termination

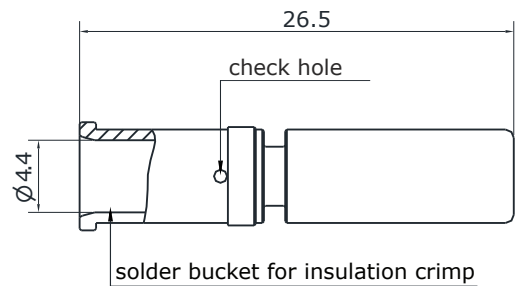
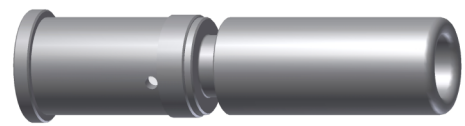
kind of termination crimp  
cross section 6,0 mm<sup>2</sup> - 10,0 mm<sup>2</sup>  
stripping length 10 mm  
crimp settings select individually

### Mechanical Data

mating cycles 500

### Tools (not part of product contents)

(analog crimping tool order code: C0.008.00)  
(positioner for 3,6mm Contact order code: C0.249.00)



### Main Dimension

contact socket

