

Elektrische Werte

Bemessungsstrom bis 35A

Werkstoff

Kontakt Messing, vergoldet

Anschluß

Anschlußart crimp
Anschlußbereich 1,5 - 4mm²
Abisolierlänge 9,5 mm
Crimpeinstellungen sind individuell zu wählen

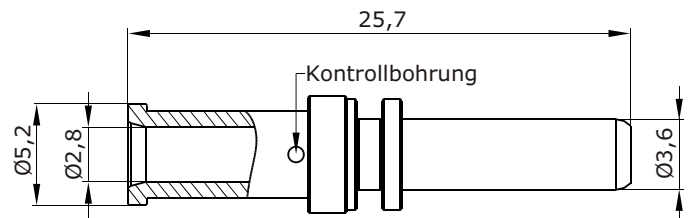
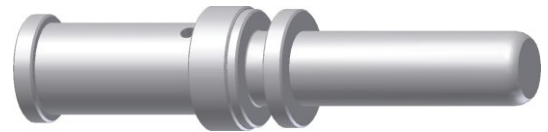
Mechanische Werte

Steckzyklen 500

Werkzeuge

 (nicht im Lieferumfang enthalten)

Crimpzange Best.-Nr. C0.008.00
(Positioniereinsatz für 3,6mm Kontakte Best.-Nr. C0.249.00)



Hauptabmessungen

Kontaktstift

Elektrical Data

Rated current to 35A

Material

contact brass, gold plated

Termination

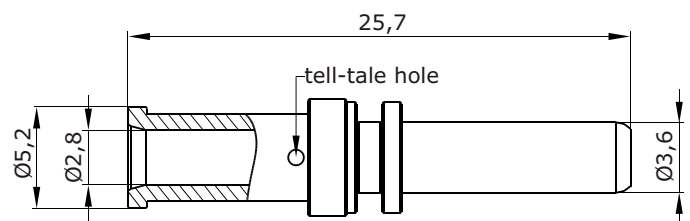
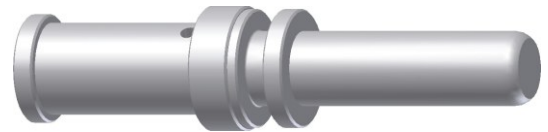
kind of termination crimp
cross section 1,5 - 4mm²
stripping length 9,5 mm
crimping settings select individually

Mechanical Data

mating cycles 500

Tools (not part of product contents)

crimp tool order code: C0.008.00
(positioner for 3,6mm contacte order code: C0.249.00)



Main Dimensions

contact pin